






TIMBER INDUSTRY ROAD EVALUATION STUDY - 2006

BENALLA SHIRE TIMBER ROADS

LEGEND




Base Data

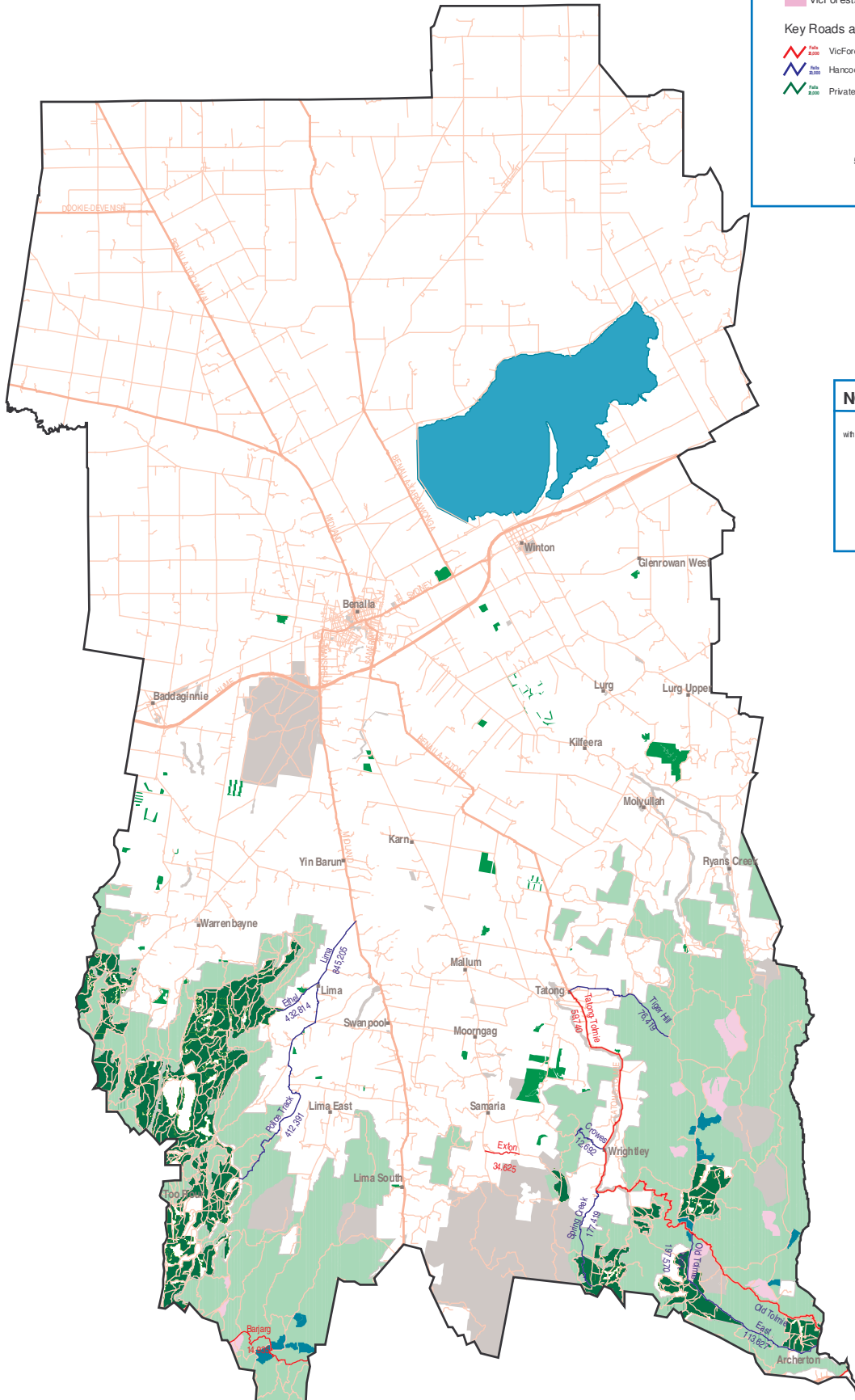
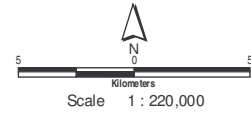
-  Shire Boundary
-  Major Roads
-  Minor Road Network
-  Town Locations
-  Public Land not available for Harvesting

Forest Estate of Major Timber Producers

-  Hancock's Victoria Plantation Estate
-  Private Plantation Estate
-  VicForests State Forest Estate
-  VicForests State Forest Harvesting 2000-2005
-  VicForests State Forest Areas Approved for harvesting 2004-2009

Key Roads and Haulage Volumes (m3) by Manager

-  VicForests Projected Haulage Roads with Total Predicted Volume 2005/10
-  Hancock's Projected Haulage Roads with Total Predicted Volume 2005/10
-  Private Estate Projected Haulage Roads with Total Predicted Volume 2005/10



NOTES ON MAP COMPILATION

This map has been compiled for TIRES North East with the Co-operation of Local & State Government and the Forest Industry.

The map displays graphically the information supplied by Forest Industry, and produced in Table form as Appendix Seven, of the 2006 TIRES Report.

For information on the map data, contact Bernard Pobb, Strategic Planner, VicForests, North East Regional Office, Sydney Road, Benalla.

Phone 03 57 611 553